



# *Accessible Democracy*

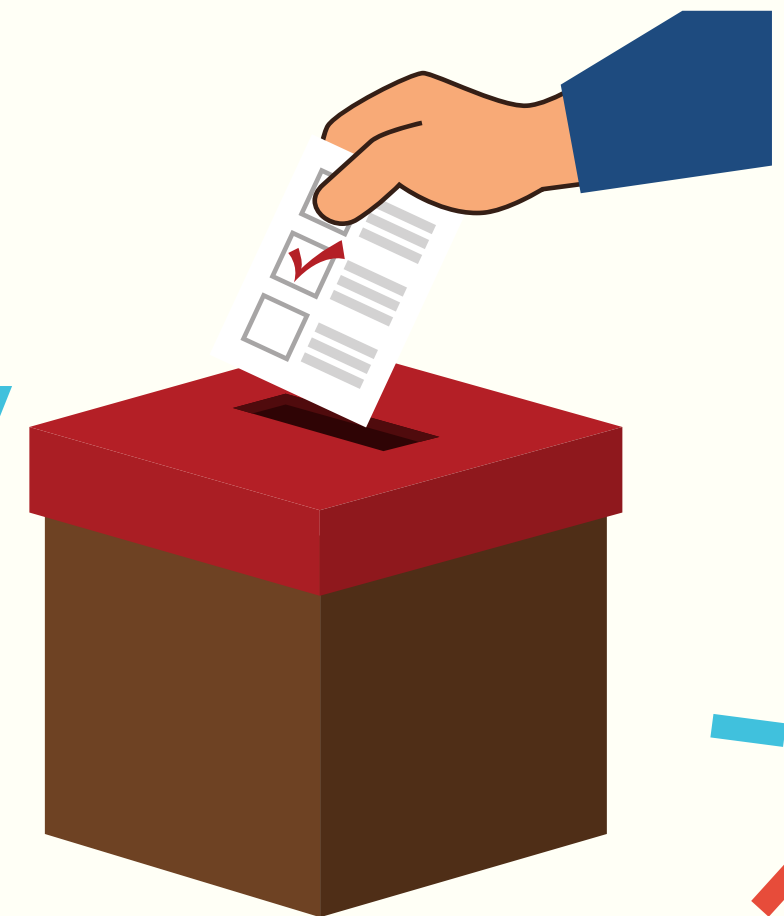
United We Can Achieve Change

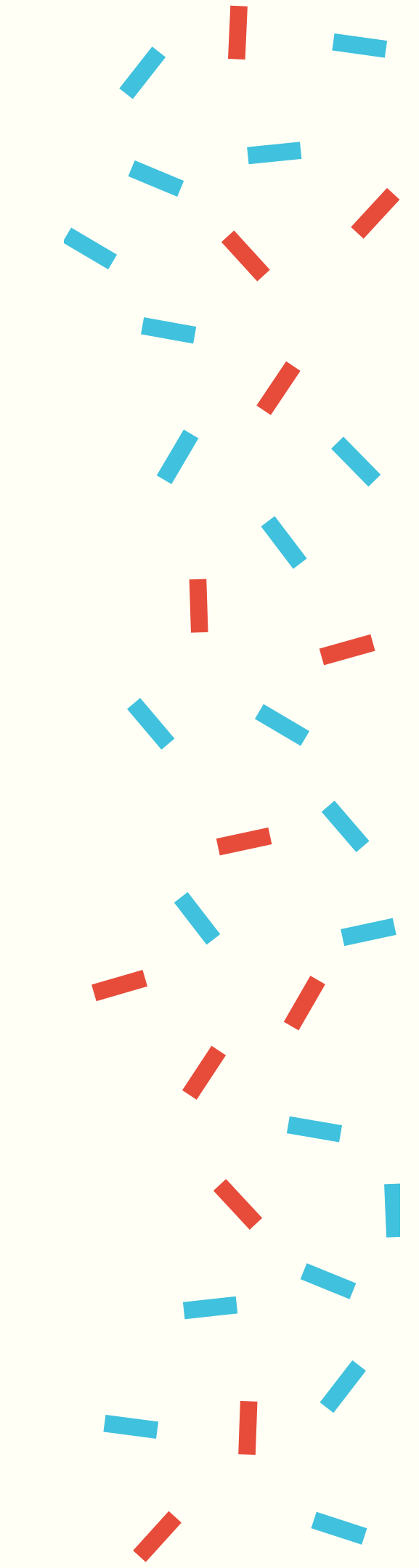
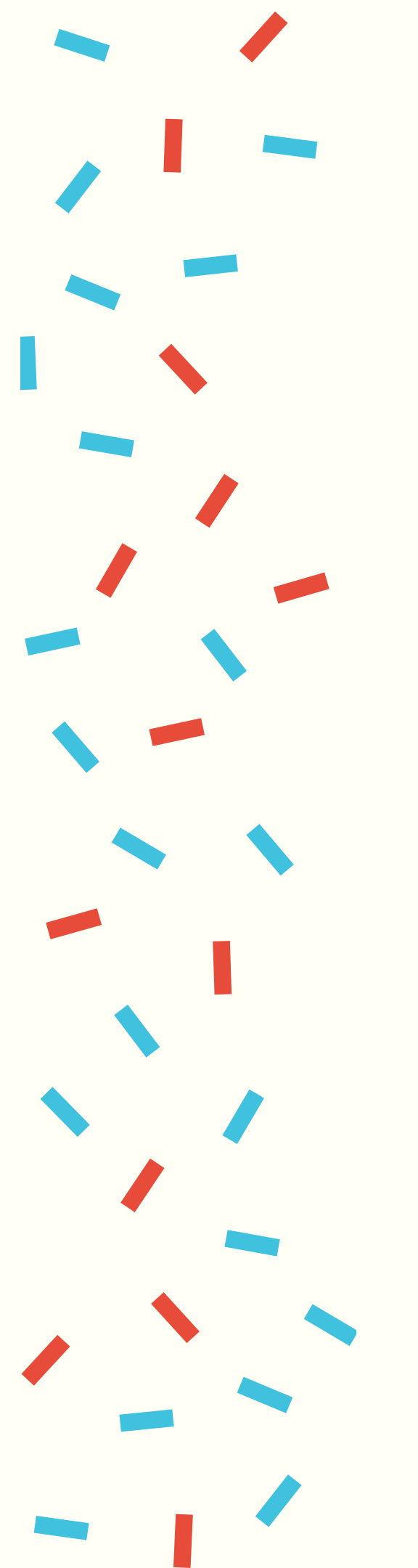
Tate Fall, MPA

Alabama Disabilities Advocacy Program

# *Today We'll Discuss...*

- An overview of elections and why they matter
- Making decisions on candidates and laws
- Preparing for Election Day
- What happens on Election Day





# *Elections Overview*

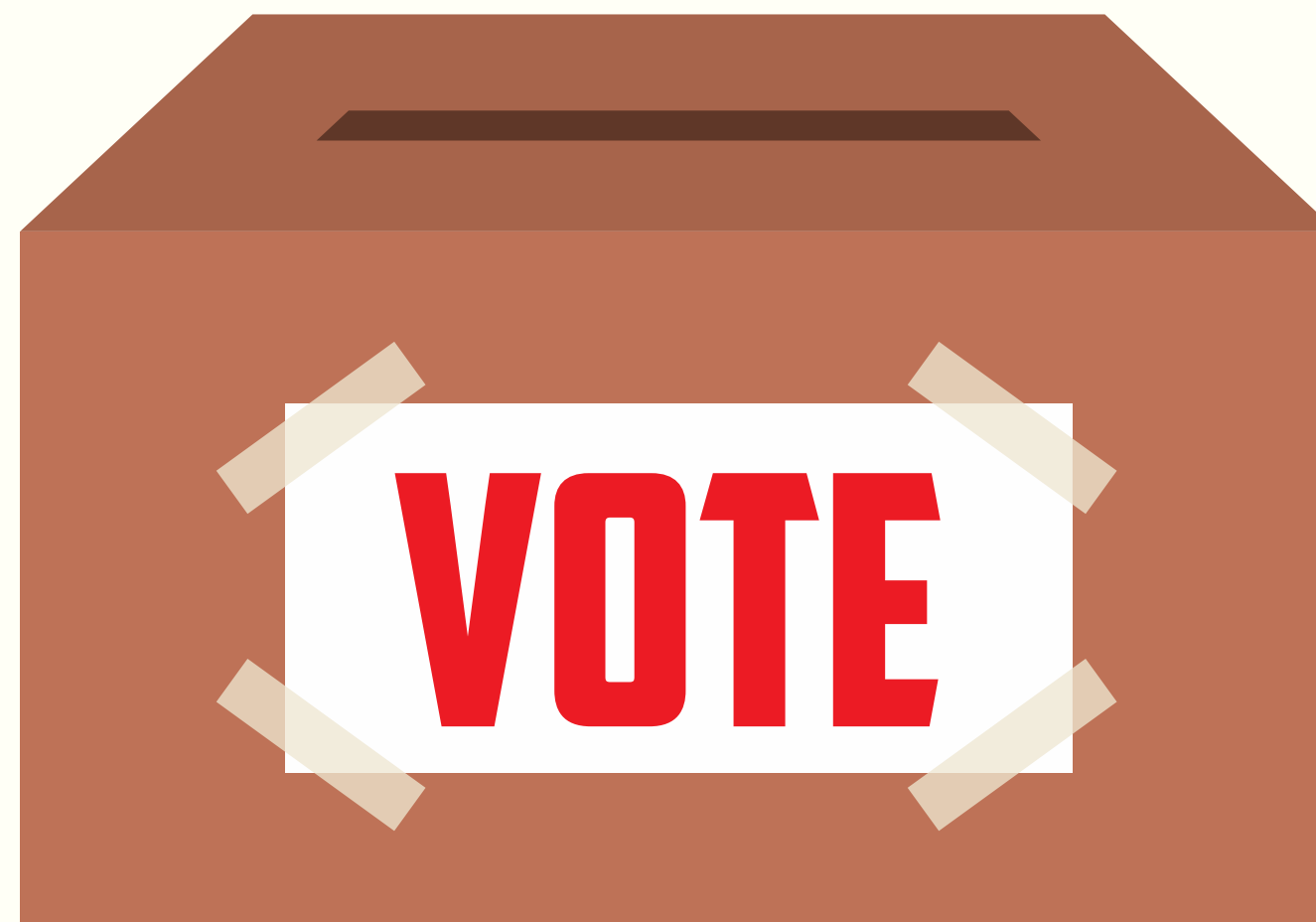
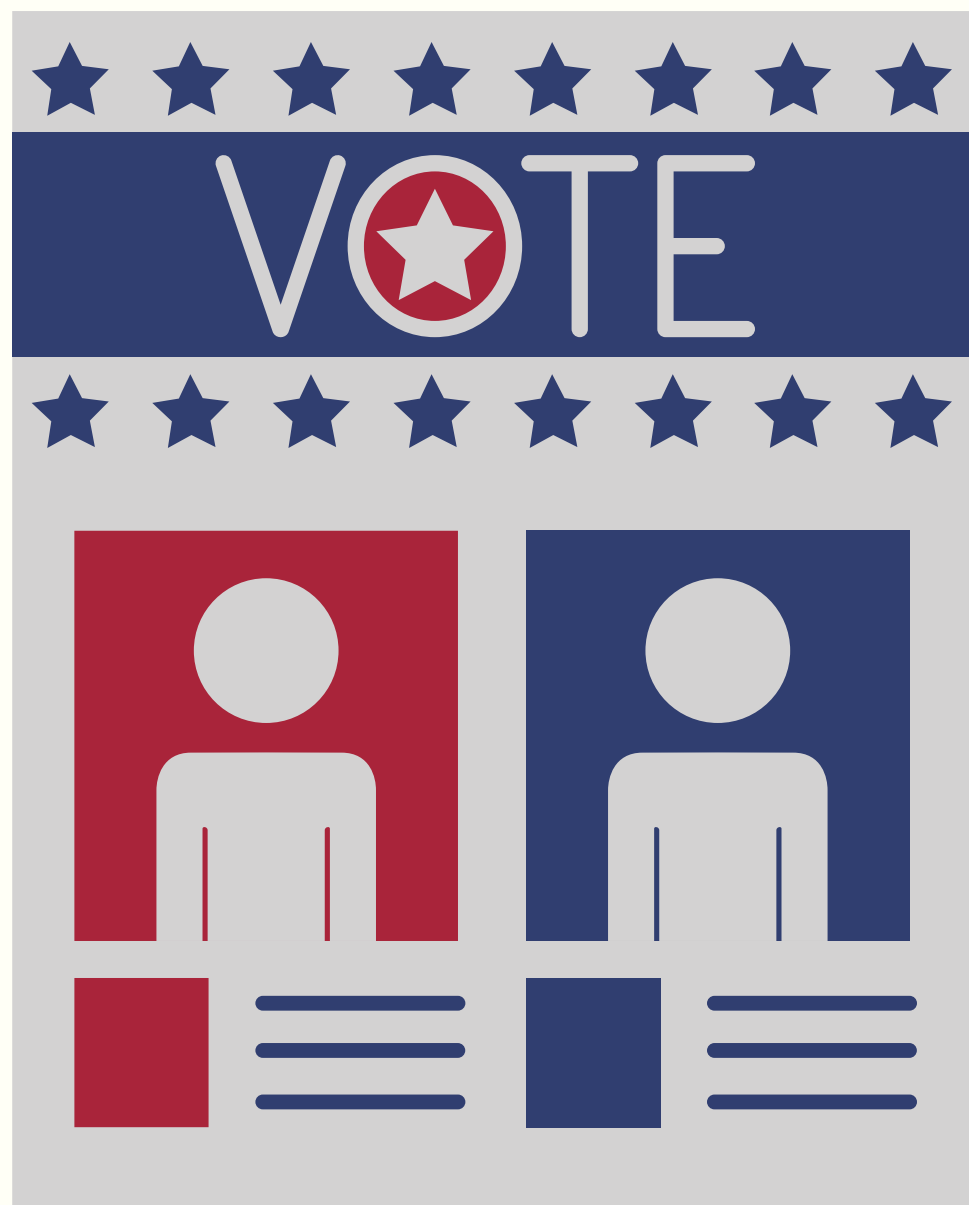
A decorative border on the left side of the image consisting of small, rectangular confetti pieces in red and blue colors, scattered in a circular pattern.

# *Who has voted?*

Please raise your hand or  
have your neighbor raise  
both hands.



*What have you voted  
for?*



How did it make you



feel to vote?



100



*Why does voting  
matter?*



# Things We Vote On

- President
- Senators
- Representatives
- Governor
- Mayor
- County Commissioner
- City Council Members
- Taxes, Bonds
- School Board Members
- Measures, Propositions, Issues







# Researching Candidates and Laws

# *What's Important to You?*

Healthcare?

Education?

Religious rights?

Immigration?

Public programs?

Mental health?



# Looking at the Options

What are some **reliable** places to find information about candidates or laws?







# *Making Decisions*

- Think about what matters to you
- Look at what the candidate says matters to them or what a new law would change
- How will this change what you care about? Will it be good or bad?

A circular arrangement of small, rectangular confetti pieces in red and blue, located in the top-left corner of the image.

Preparing for  
Election Day

A circular arrangement of small, rectangular confetti pieces in red and blue, located in the top-right corner of the image.

# Voting Rights

- You can bring someone you trust to help you vote: poll workers can not deny you this support person
- There are some people who can not help you vote: your boss, union officer from your job or a candidate who is on the ballot
- **You can ask for help!**
- Poll workers can help you with the voting process. Poll workers **can not** tell you who to vote for or explain the issues in simpler terms

# Voting Rights

- You can get a new ballot if you make a mistake (up to two replacement ballots)
- You can ask for a provisional ballot if you are told that you cannot vote for some reason\*\*



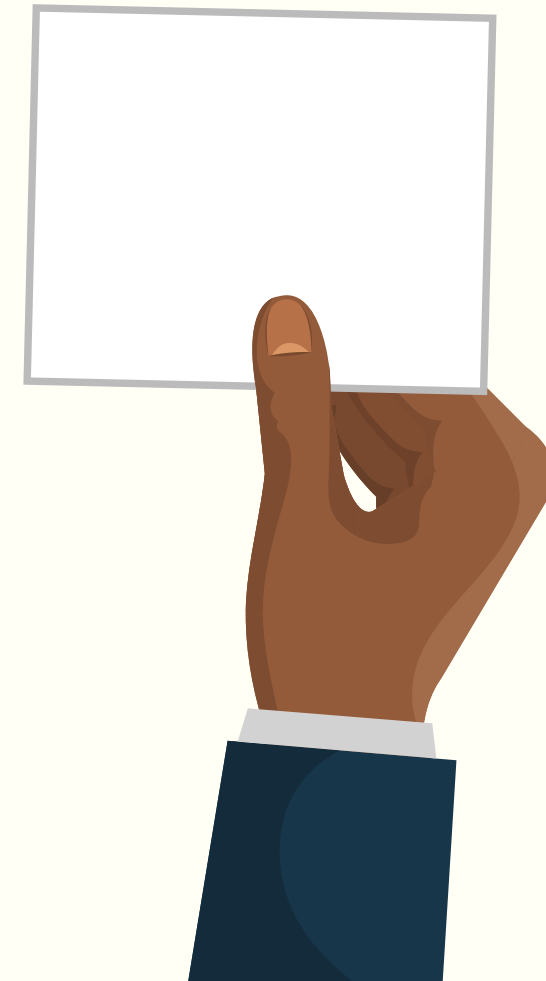
# *Who Can Reigister?*

- You must be 18 years old
- You must turn in a complete voter registration form ten days before an election
- You must be a citizen of the United States
- No felony conviction
- **You do not have to read, write or be able to use the voting machines**



# *How To Register To Vote*

- Complete and sign the Voter Registration Form
- Mail it to your local Board of Registrars
- OR you can register online!



# *Voter ID*

- Alabama Driver's License
- Alabama Nondriver ID
- Alabama photo voter ID Card
- US Passport
- Government ID
- University ID
- Military ID
- Tribal ID



# *Transportation*

- How will you get there?
- Who will drive you?
- What time are you planning on going?





*What will happen on  
Election Day?*

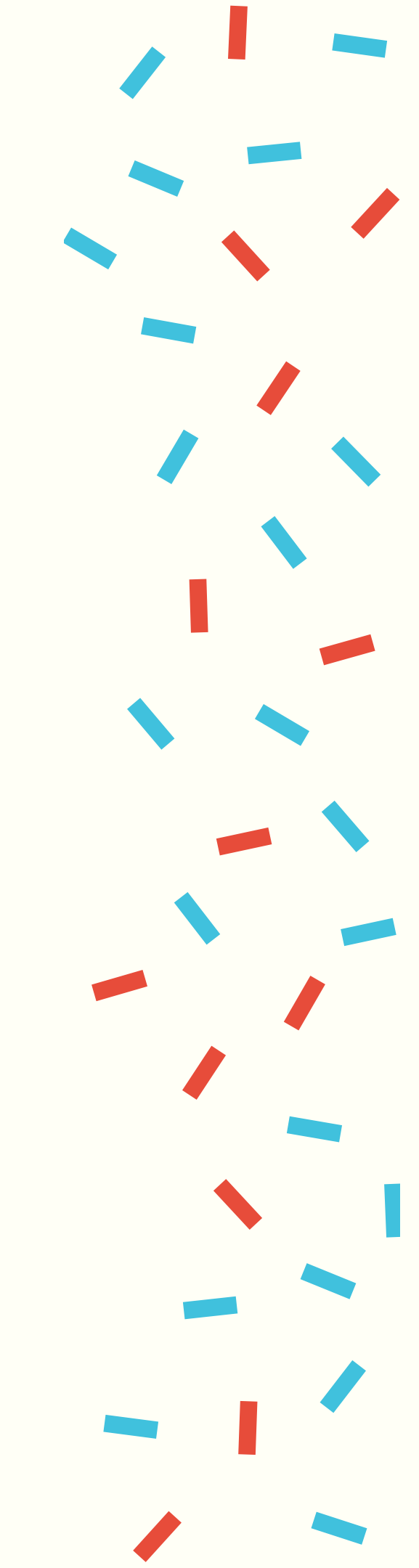


# *Election Day*

1. Get to the poll site



# *Election Day*

1. Get to the poll site
  2. Get in line to check-in
- 



# *Election Day*

1. Get to the poll site
2. Get in line to check-in
3. Check-in with the poll workers



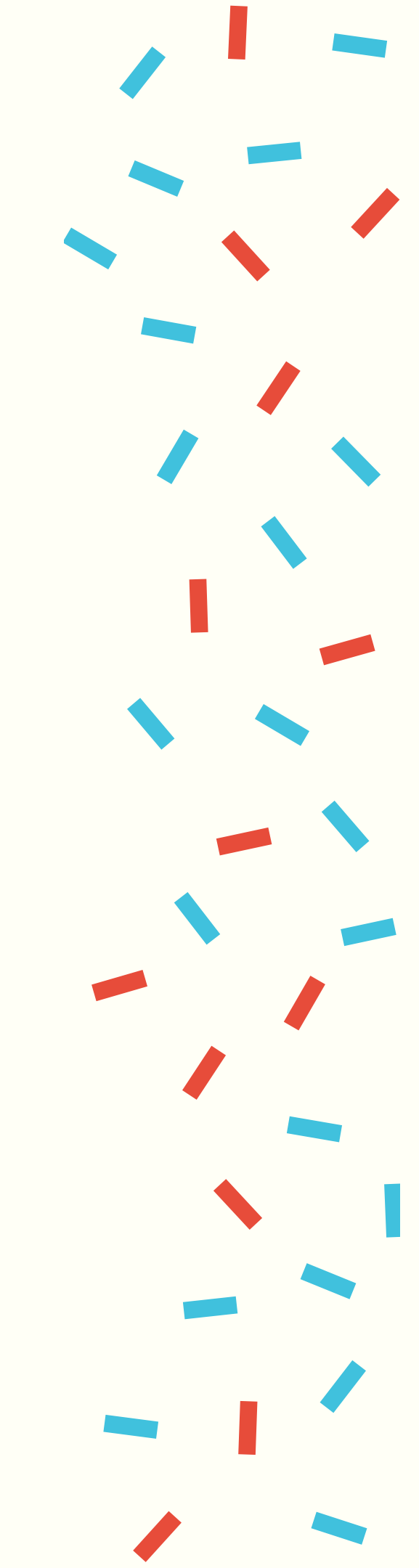
# *Election Day*

1. Get to the poll site
2. Get in line to check-in
3. Check-in with the poll workers
4. Show them your ID





# *Election Day*

1. Get to the poll site
  2. Get in line to check-in
  3. Check-in with the poll workers
  4. Show them your ID
  5. Sign the poll book
- 



# *Election Day*

1. Get to the poll site
2. Get in line to check-in
3. Check-in with the poll workers
4. Show them your ID
5. Sign the poll book
6. Get your ballot

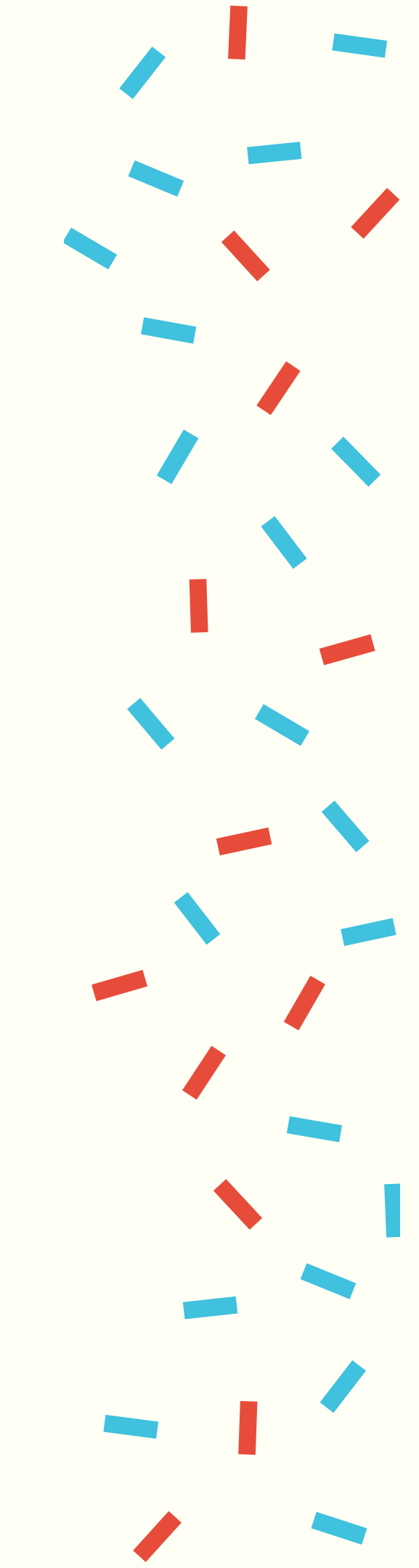


# *Election Day*

1. Get to the poll site
2. Get in line to check-in
3. Check-in with the poll workers
4. Show them your ID
5. Sign the poll book
6. Get your ballot
7. Mark your ballot

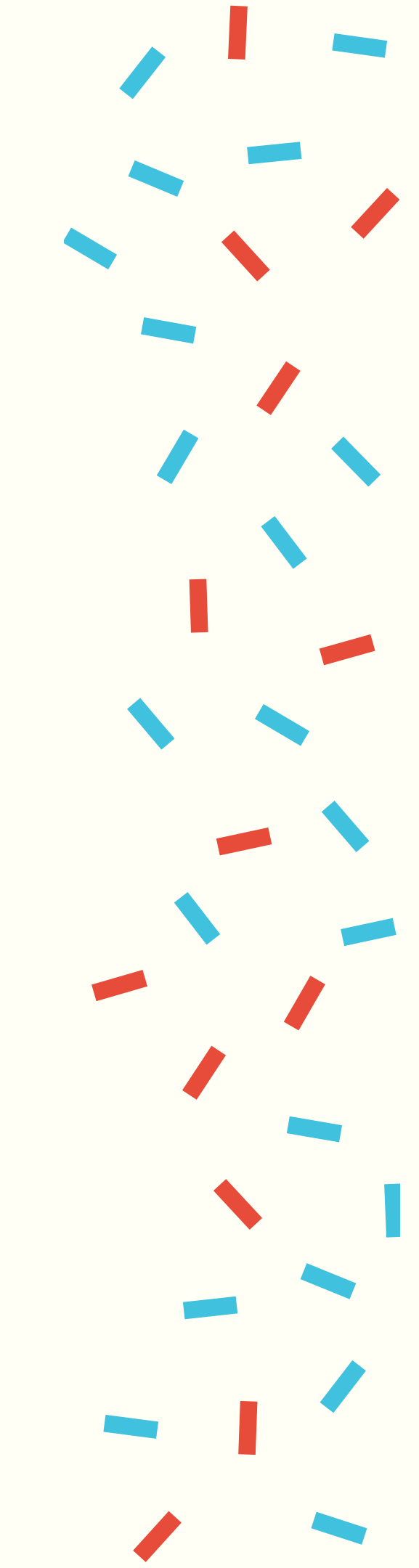


# *Election Day*

1. Get to the poll site
  2. Get in line to check-in
  3. Check-in with the poll workers
  4. Show them your ID
  5. Sign the poll book
  6. Get your ballot
  7. Mark your ballot
  8. Put your ballot in the machine
- 

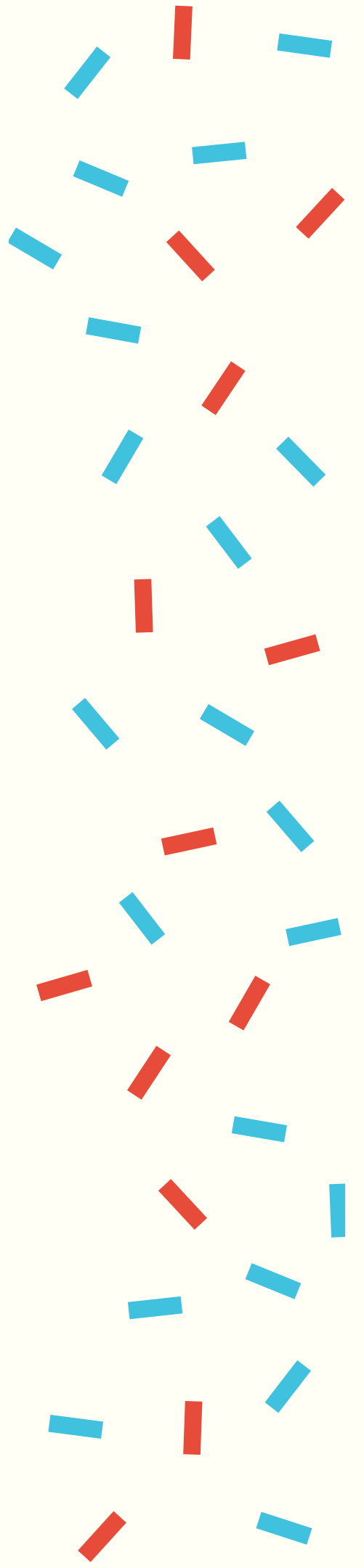


# *Election Day*

1. Get to the poll site
  2. Get in line to check-in
  3. Check-in with the poll workers
  4. Show them your ID
  5. Sign the poll book
  6. Get your ballot
  7. Mark your ballot
  8. Put your ballot in the machine
  9. Get your "I Voted" sticker
- 



# *Election Day*

1. Get to the poll site
  2. Get in line to check-in
  3. Check-in with the poll workers
  4. Show them your ID
  5. Sign the poll book
  6. Get your ballot
  7. Mark your ballot
  8. Put your ballot in the machine
  9. Get your "I Voted" sticker
  10. Celebrate voting!
- 



# Poll Workers

# *How to Get Around Voting Problems*

**Problem:** The entrance to the polling place is not accessible for voters who use wheelchairs or walkers.



# *How to Get Around Voting Problems*

- **What Do I Do?** Ask about other entrances into the building and call ADAP if there is not an accessible entrance.

# *How to Get Around Voting Problems*

**Problem:** You ask for help to vote and  
the poll workers says they are too busy.

# *How to Get Around Voting Problems*

**What Do I Do?** Do your best to explain your needs. If that doesn't help, ask another poll worker to help you OR if you have someone with you, ask them to help.

# *How to Get Around Voting Problems*

**Problem:** The poll worker does not understand your speech.

# *How to Get Around Voting Problems*

**What Do I Do?** Use a communication device or you can ask a family member or friend you trust and respect to translate for you. Tell them you are capable of voting and know how to do it and if needed you can tell them it is your right to vote.

# *How to Get Around Voting Problems*

**Problem:** The poll worker says you cannot  
vote.

# *How to Get Around Voting Problems*

**What Do I Do?** Ask the poll worker to explain why you can't vote. An example might be you moved and forgot to update your voter registration card, your name changes or any other information.

# *How to Get Around Voting Problems*

**Problem:** If the poll worker says you still can't vote after showing you the proof.



# *How to Get Around Voting Problems*

- **What Do I Do?** Ask the poll worker for a provisional ballot, and ask the poll worker how the provisional ballot will be counted.